



United Nations
Educational, Scientific and
Cultural Organization



Member of
UNESCO
Associated
Schools



WELCOME TO THE ACADEMIC YEAR 2024-25

VALUES

Respect
Responsibility
Communication
Excellence in teaching & learning

VISION

EIS empowers the hearts and minds of students
by fostering educational excellence and
emotional well-being.

MISSION

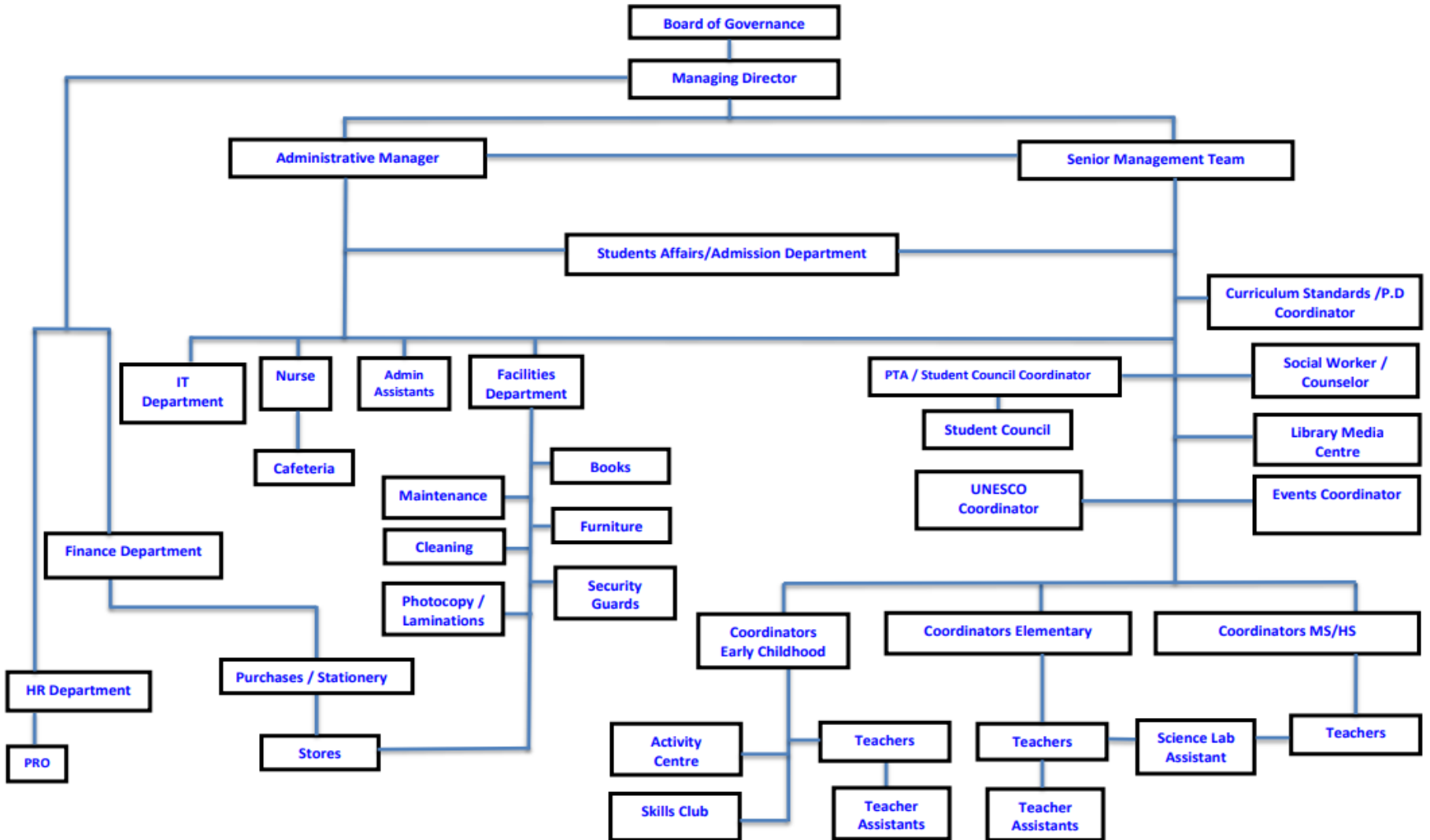
We promote students' achievement and prepare them
to become lifelong learners, equipped with 21st
century skills, optimum knowledge and
Qatari values

School Objectives

- * To raise students' attainment level to meet or exceed standards and grade-level norms in both internal and external assessments through various methods, including the use of modern technology to create interactive learning experiences, enhance the understanding of academic concepts, analyze students' performance and provide personalized recommendations.
- * To create and maintain explicit systems for collaboration and feedback among all stakeholders.
- * To strengthen the school's sense of identity for current and prospective students, parents, staff, and the wider community to have a shared understanding of the school's vision, mission, objectives, and values.
- * To involve students in the school life using their skills, knowledge, and experience to enrich their learning experience.
- * To boost parental involvement through a set of programs and events, which has a direct impact on students' attitudes, behavior, and achievement.
- * To maintain health and safety protocols that consistently improve the learning environment for all stakeholders.
- * To develop a sense of national pride and citizenship while engendering respect for diversity, individuality, and differences.
- * To promote the life skills of communication, cooperation, improving one's own learning and performance, problem solving and critical thinking skills so that a new generation of students, that is ready for the challenges of the 21st century, is nurtured.



Elite International School Structure 2024-25



Elite International School 2024-2025 School Calendar

August-2024						
Su	M	Tu	W	Th	F	Sa
				1	2	3
4	5	6	7	8	9	10
11	12	13	14	15	16	17
18	19	20	21	22	23	24
25	26	27	28	29	30	31

September-2024						
Su	M	Tu	W	Th	F	Sa
1	2	3	4	5	6	7
8	9	10	11	12	13	14
15	16	17	18	19	20	21
22	23	24	25	26	27	28
29	30					
22						

October-2024						
Su	M	Tu	W	Th	F	Sa
		1	2	3	4	5
6	7	8	9	10	11	12
13	14	15	16	17	18	19
20	21	22	23	24	25	26
27	28	29	30	31		
18						

November-2024						
Su	M	Tu	W	Th	F	Sa
					1	2
3	4	5	6	7	8	9
10	11	12	13	14	15	16
17	18	19	20	21	22	23
24	25	26	27	28	29	30
20						

December-2024						
Su	M	Tu	W	Th	F	Sa
1	2	3	4	5	6	7
8	9	10	11	12	13	14
15	16	17	18	19	20	21
22	23	24	25	26	27	28
29	30	31				
13						

January-2025						
Su	M	Tu	W	Th	F	Sa
			1	2	3	4
5	6	7	8	9	10	11
12	13	14	15	16	17	18
19	20	21	22	23	24	25
26	27	28	29	30	31	
19						

February-2025						
Su	M	Tu	W	Th	F	Sa
						1
2	3	4	5	6	7	8
9	10	11	12	13	14	15
16	17	18	19	20	21	22
23	24	25	26	27	28	
19						

March-2025						
Su	M	Tu	W	Th	F	Sa
						1
2	3	4	5	6	7	8
9	10	11	12	13	14	15
16	17	18	19	20	21	22
23	24	25	26	27	28	29
30	31					
20						

April-2025						
Su	M	Tu	W	Th	F	Sa
		1	2	3	4	5
6	7	8	9	10	11	12
13	14	15	16	17	18	19
20	21	22	23	24	25	26
27	28	29	30			
19						

May-2025						
Su	M	Tu	W	Th	F	Sa
				1	2	3
4	5	6	7	8	9	10
11	12	13	14	15	16	17
18	19	20	21	22	23	24
25	26	27	28	29	30	31
21						

June-2025						
Su	M	Tu	W	Th	F	Sa
1	2	3	4	5	6	7
8	9	10	11	12	13	14
15	16	17	18	19	20	21
22	23	24	25	26	27	28
29	30					
9						

July-2025						
Su	M	Tu	W	Th	F	Sa
		1	2	3	4	5
6	7	8	9	10	11	12
13	14	15	16	17	18	19
20	21	22	23	24	25	26
27	28	29	30	31		

- First Day for Administration & Coordinators / Last Day for All Staff
- First Day for Teachers / Teacher Assistants
- First / Last Day for Students- First Day of Semester 2 for students
- Events
- School Holidays
- Professional Development Workshop

- Parents Evening
- End of Semester Exams for Grades 4 to 10
- Report Cards
- School Exhibition and Parents Evening
- Parent Orientation
- Graduation Day

School Policies

(available on the school's website)

School Opening Plan	Attendance Policy	Behavior Policy
Uniform- Dress Code	Assessment Policy	Web Portal Guidelines
Grade Advancement Policy	Web Portal Guidelines	School Expectations
Food Policy	Health, Safety & Security Policy	School Home Communication Strategies
Lines of Communication	Procedure for Early Pick Up	BYOD (Bring Your Own Device) Policy
Cybersecurity Policy	School Complaint Policy	Anti-Bullying

Attendance Policy

Punctual and regular **attendance** is an essential responsibility of each student. It affects the student's academic achievements.

All students must be in school at 7:00 am. A student should only be absent in case of emergencies such as illness.

An absence due to sickness will be considered excused if a doctor's note accompanies the child to school.

Attendance Rewards:

Principal for the Day

Attendance Wall

A Commendation Letter/ Certificate

Daily Schedule

7:15 - 8:05	Session 1
8:05 - 8:55	Session 2
8:55 - 9:45	Session 3
9:45 - 10:10	Break (25 min)
10:10 - 11:00	Session 4
11:00 - 11:50	Session 5
11:50 - 12:15	Prayer Time (10 min) + Break (15 min)
12:15 - 1:05	Session 6
1:05 - 2:00	Session 7

Session's Allocation

Core Subject	Sessions per Week
English	7
Math	5
Science	5
Arabic	5
Social Studies	5
Islamic Studies	2
Qatar History	1
LMC	1

Two electives taught each 2 sessions a week based on student's selection

Computer Science	ART
Physical Education	French

EIS follows a standard-based American curriculum following:

- CCSS in English and Math
- NGSS in Science
- US National Framework & Geography Standards in SST
- MoEHE standards in Arabic, Islamic Studies and QH
- * ISTE in Computer Science
- * US National Standards in Art and PE
- * Le Fle in French

Grade Advancement Policy

- * Students should score at least 60% in every subject to earn a credit for that subject.
- * Failing a core subject means having to repeat the subject for the next academic year.
- * The following number of credits will be used to determine a student's grade placement:
 - Freshman (Grade 9) 1-4 credits
 - Sophomore (Grade 10) 5-11 credits
 - Junior (Grade 11) 12-18 credits
 - Senior (Grade 12) 19-26 credits

A student who does not meet these credit requirements will remain in the same grade placement until the necessary credits are earned to advance to the next grade.

Assessment Policy

- * Reflecting and supporting the school's vision and mission, the assessment policy that we have in place is based on an on-going approach. It helps identify areas where students need intervention and support.
- * It consists of various assessment tools that range from formative and summative assessments and include homework, quizzes, and projects in addition to end of semester examinations.

MAP Tests

- * MAP tests are computer-adaptive assessments designed to measure students' academic growth and proficiency in Math, English reading and English language usage over time.
- * They dynamically adjust the difficulty of questions based on each student's responses, enabling a precise evaluation of their abilities.
- * Students should complete all tasks assigned by teachers on various online platforms including Khan Academy and Achieve3000 to be better prepared for their Map tests.
- * Students' results on MAP Test (Math and English) and Achieve3000 (English) are parts of the grading system for Grades 6 to 9 students.
- * Failure in these tests will result in students repeating the same grade level in the next academic year 2025-2026.

Online Reading Programs

- * Achieve 3000 for English: is a supplemental online literacy program that provides nonfiction reading content to students and focuses on fluency, reading comprehension, vocabulary, and writing skills.
- * A session is allocated weekly for Achieve3000 tasks.
- * Students should follow their teacher's instructions and submit all tasks on time, with quality in mind to achieve a minimum of 75% on every task.
- * Arabic reading program
- * Students will be provided with their online credentials at the beginning of the academic year 2024-2025.

Rewards

- * On a daily basis, students will be awarded:
Academic Achievement Coupons
Behavior and Participation Coupons
- * Every other week, students will be awarded:
Elite of the Week based on their academic and behavior performance
- * Every semester, students will be awarded:
Academic Excellence Certificate
Behavior, Participation, and Extra-Curricular Certificate
Academic Progress Certificate (semester 2)
House Points

School Uniform

Type	Males	Females
Official Uniform	Shirt with long or short sleeves	Long or short-sleeved shirt
		Long-sleeved shirt (for Grade 7 and above)
	Pants or sports shorts (not above the knee from Grade 4 and above)	Pants, skirt, or apron that is not above the knee with women's leggings/stockings for the lower part of the body It must not be transparent when wearing the skirt. Or skirt to the ankle (stockings/leggings not required in this case)
Sports Uniform (Only on PE days)	Sports shirt	Sports shirt
	Pants or sports shorts	Pants or sports shorts (with legging in case of wearing shorts)
		Loose pants (From Grade 4 and above)

School Uniform

All students must wear school uniforms.

- School uniforms with black shoes must be worn at all times when attending school and students must be smartly presented.
- PE uniforms are allowed only if the students have PE lessons.
- Hair must be neatly tied, no fancy hair pieces allowed.
- No jewelry except a watch and a pair of stud earrings (for girls) should be worn.
- Make up and nail varnish are not allowed.

Health and Safety

- Students are not allowed to bring hard or pointed objects / toys like plastic knives / plastic swords to school as they can cause injury.
- Students will be sent home when detected with any communicable disease and will be allowed back to school only if they produce medical clearance certificate.
- Medications, both prescriptions and over the counter, cannot be administered by the nurse without an “authorization to administer medication” / parental consent form. These forms can be obtained from the nurse.
- All medicines must be hand delivered by the parent to the school nurse directly. All medicines must be taken in the school clinic only.

School– Home Connection

School-home connection is so strongly tied to student's success that it can predict how a student does in school.

Attend parent-teacher meeting

Take part in Parent-Teacher Association

Check for SMS and circulars posted on the school's portal on a regular basis

Check e-planner and resources available on the school's portal daily

Communicate your concerns through the school's portal/ phone calls/ scheduled appointments

Volunteer in school events

Respond to surveys

Follow us on our social media accounts/ Check our newsletter

Accreditation Renewed in 2022-2023

- * EIS was first accredited by QNSA in 2013.
- * EIS renewed its QNSA accreditation successfully in 2016-2017.
- * EIS renewed its QNSA accreditation successfully in 2019-2020.
- * EIS renewed its QNSA accreditation successfully in 2022-2023.

The school is further seeking international accreditation by WASC.

Thank you for coming

Please fill out the PTA Nomination form.

Your suggestions and comments are very valuable to us to ensure we are progressing towards a common goal.

Have a great day!