



United Nations  
Educational, Scientific and  
Cultural Organization



Member of

UNESCO  
Associated  
Schools



# WELCOME TO THE ACADEMIC YEAR 2022-23

## VALUES

Respect  
Responsibility  
Communication  
Excellence in teaching & learning

## VISION

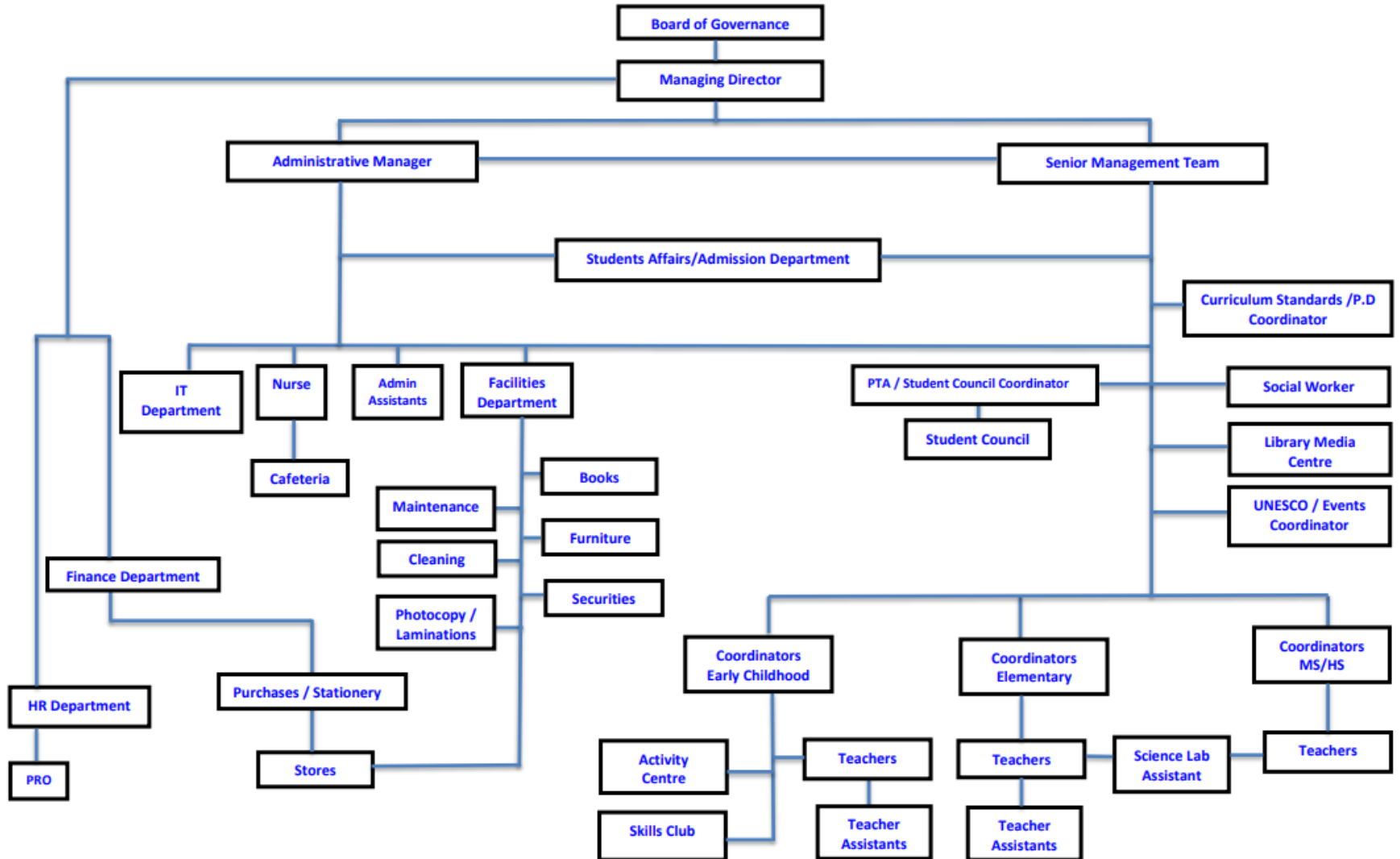
EIS empowers the hearts and minds of students  
by fostering educational excellence and  
emotional well-being.

## MISSION

We promote students' achievement and prepare them  
to become lifelong learners, equipped with 21<sup>st</sup>  
century skills, optimum knowledge and  
Qatari values



# Elite International School Structure 2022-23



# Elite International School

## 2022-2023 School Calendar

August-2022						
Su	M	Tu	W	Th	F	Sa
	1	2	3	4	5	6
7	8	9	10	11	12	13
14	15	16	17	18	19	20
21	22	23	24	25	26	27
28	29	30	31			
9						

September-2022						
Su	M	Tu	W	Th	F	Sa
				1	2	3
4	5	6	7	8	9	10
11	12	13	14	15	16	17
18	19	20	21	22	23	24
25	26	27	28	29	30	
21						

October-2022						
Su	M	Tu	W	Th	F	Sa
						1
2	3	4	5	6	7	8
9	10	11	12	13	14	15
16	17	18	19	20	21	22
23	24	25	26	27	28	29
30	31					
22						

November-2022						
Su	M	Tu	W	Th	F	Sa
		1	2	3	4	5
6	7	8	9	10	11	12
13	14	15	16	17	18	19
20	21	22	23	24	25	26
27	28	29	30			
13						

December-2022						
Su	M	Tu	W	Th	F	Sa
				1	2	3
4	5	6	7	8	9	10
11	12	13	14	15	16	17
18	19	20	21	22	23	24
25	26	27	28	29	30	31
5						

January-2023						
Su	M	Tu	W	Th	F	Sa
1	2	3	4	5	6	7
8	9	10	11	12	13	14
15	16	17	18	19	20	21
22	23	24	25	26	27	28
29	30	31				
22						

February-2023						
Su	M	Tu	W	Th	F	Sa
			1	2	3	4
5	6	7	8	9	10	11
12	13	14	15	16	17	18
19	20	21	22	23	24	25
26	27	28				
19						

March-2023						
Su	M	Tu	W	Th	F	Sa
			1	2	3	4
5	6	7	8	9	10	11
12	13	14	15	16	17	18
19	20	21	22	23	24	25
26	27	28	29	30	31	
17						

April-2023						
Su	M	Tu	W	Th	F	Sa
						1
2	3	4	5	6	7	8
9	10	11	12	13	14	15
16	17	18	19	20	21	22
23	24	25	26	27	28	29
30						
16						

May-2023						
Su	M	Tu	W	Th	F	Sa
	1	2	3	4	5	6
7	8	9	10	11	12	13
14	15	16	17	18	19	20
21	22	23	24	25	26	27
28	29	30	31			
23						

June-2023						
Su	M	Tu	W	Th	F	Sa
				1	2	3
4	5	6	7	8	9	10
11	12	13	14	15	16	17
18	19	20	21	22	23	24
25	26	27	28	29	30	
13						

July-2023						
Su	M	Tu	W	Th	F	Sa
						1
2	3	4	5	6	7	8
9	10	11	12	13	14	15
16	17	18	19	20	21	22
23	24	25	26	27	28	29
30	31					

- First / Last Day for Students
- End of Semester Exams for Grades 5 to 8
- Report Cards

- Parents Evening
- School Holidays

# School Policies

School Opening Plan	Attendance Policy	Behavior Policy
Assessment Policy	Web Portal Guidelines	School Expectations
Food Policy	General Policies	School Home Communication Strategies
Line of Communication	Procedure for Early Pick Up	

# Attendance Policy

Punctual and regular **attendance** is an essential responsibility of each student. It affects the student's academic achievements.

All students must be in school at 7:00 am. A student should only be absent in case of emergencies such as illness.

An absence due to sickness will be considered excused if a doctor's note accompanies the child to school.

## **Attendance Rewards:**

Principal For the Day

Attendance Wall

A Commendation Letter/ Certificate

# Assessment Policy

- \* Reflecting and supporting the school's vision and mission, the assessment policy that we have in place is based on an on-going approach. It helps identify areas where students need intervention and support.
- \* It consists of various assessment tools that range from formative and summative assessments and include classwork, homework, quizzes, and projects.

# School– Home Connection

School-home connection is so strongly tied to student's success that it can predict how a student does in school.

Attend parent-teacher meeting

Take part in Parent-Teacher Association

Check for SMS and circulars posted on the school's portal on a regular basis

Check planner/ e-planner and resources available on the school's portal daily

Communicate your concerns through the school's portal/ phone calls/ scheduled appointments

Volunteer in school events

Respond to surveys

Follow us on our social media accounts/ Check our newsletter

# Schedule For Early Childhood

## Overview

### Pre-School:

**English-** Tracing book for Preschool/ My ABC Booklet/ English Letters and Sounds – Reading Readiness

**Math:** Gateway to Maths / Math Basic skills - Numbers

### EARLY CHILDHOOD TIME

<b>7:00 - 7:15</b>	<b>Reception</b>
<b>7:15 -7:45 (30 mins)</b>	<b>Etiquette and Protocol + Circle Time</b>
<b>7:45 - 8:20</b>	
<b>8:20 - 8:45</b>	<b>Break 1 = 25 mins</b>
<b>8:45 - 9:20</b>	
<b>9:20 - 9:55</b>	
<b>9:55 - 10:30</b>	
<b>10:30 -10:55</b>	<b>Break 2= 25 mins</b>
<b>10:55 - 11:30</b>	
<b>11:30 - 12:05</b>	
<b>12:05 - 12:40</b>	
<b>12:40 - 1:15</b>	
<b>Dismissal</b>	

### PRE-K:

- **English-** The Family Words Booklet / **My ABC Booklet 1** and My ABC booklet 2 /Pre-decodable books
- **Math: Practice Book**
- **Science- Harcourt.**
- **Arabic: Ministry of Education and Higher Education Curriculum**
- **French: Les petits Loustics 1**

### K:

- **English- Journeys (HMH) (Common Core Standards) for K**
- **Math- Go Math (HMH) (Common Core Standards) for K**
- **Science –(HMH) Science Dimension (Next Generation Science Standards) K**
- **Social Studies- Harcourt for K**
- **French- Les petits Loustics 2**
- \* **Arabic- Ministry of Education and Higher Education Curriculum**
- \* **Islamic studies- Ministry of Education and Higher Education Curriculum**



# Subjects Taught in Early Childhood (35 min/period)

	Class	SC	MATH	ENG	A to Z	SST	FRE	ARABIC	REL	ART	A.C	SC	PE	Play Time	Ind Work	Circle Time Etiquette protocol	Total
	PS A	2	6	10		1	3	5	2	2	3	3	2	1		5	45
	PS B	2	6	10		1	3	5	2	2	3	3	2	1		5	45
	PK A	2	7	9		1	3	5	2	2	2	2	2	1	2	5	45
	PK B	2	7	9		1	3	5	2	2	2	2	2	1	2	5	45
	PK C	2	7	9		1	3	5	2	2	2	2	2	1	2	5	45
	PK D	2	7	9		1	3	5	2	2	2	2	2	1	2	5	45
	KA	3	7	7	1	2	3	5	2	2	1	2	2	1	2	5	45
	KB	3	7	7	1	2	3	5	2	2	1	2	2	1	2	5	45
	KC	3	7	7	1	2	3	5	2	2	1	2	2	1	2	5	45
	KD	3	7	7	1	2	3	5	2	2	1	2	2	1	2	5	45

# Accreditation Renewal in 2022-2023



Qatar National School Accreditation  
(QNSA)

- \* EIS was first accredited by QNSA in 2013.
- \* EIS renewed its QNSA accreditation successfully in 2016-2017
- \* EIS renewed its QNSA accreditation successfully in 2019-2020
- \* EIS will apply for QNSA renewal in 2022-2023.

The school is further seeking international accreditation by WASC.

# Thank you for coming

Please fill out the PTA Nomination form.

Your suggestions and comments are very valuable to us.

Kindly jot down your suggestions to ensure we are progressing towards a common goal.

Have a great day!