



United Nations
Educational, Scientific and
Cultural Organization

Member of



UNESCO
Associated
Schools



WELCOME TO THE ACADEMIC YEAR 2022-23

VALUES

Respect
Responsibility
Communication
Excellence in teaching & learning

VISION

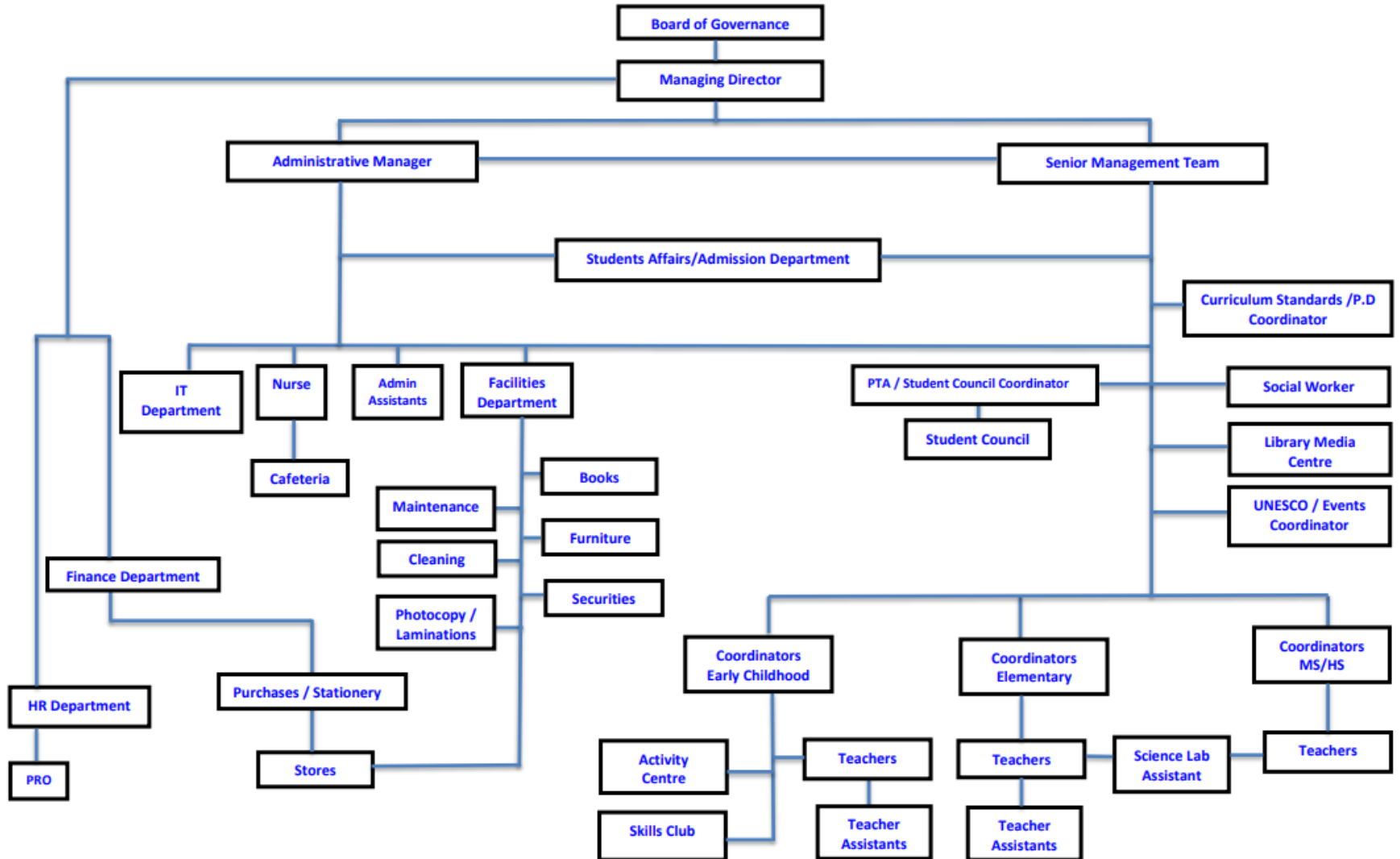
EIS empowers the hearts and minds of students
by fostering educational excellence and
emotional well-being.

MISSION

We promote students' achievement and prepare them
to become lifelong learners, equipped with 21st
century skills, optimum knowledge and
Qatari values



Elite International School Structure 2022-23



School Policies

School Opening Plan	Attendance Policy	Behavior Policy
Assessment Policy	Web Portal Guidelines	School Expectations
Food Policy	General Policies	School Home Communication Strategies
Line of Communication	Procedure for Early Pick Up	BYOD (Bring Your Own Device) Policy

Attendance Policy

Punctual and regular **attendance** is an essential responsibility of each student. It affects the student's academic achievements.

All students must be in school at 7:00 am. A student should only be absent in case of emergencies such as illness.

An absence due to sickness will be considered excused if a doctor's note accompanies the child to school.

Attendance Rewards:

Principal For the Day

Attendance Wall

A Commendation Letter/ Certificate

Assessment Policy

- * Reflecting and supporting the school's vision and mission, the assessment policy that we have in place is based on an on-going approach. It helps identify areas where students need intervention and support.
- * It consists of various assessment tools that range from formative and summative assessments and include homework, quizzes, and projects in addition to end of semester examinations.

Rewards

- * On a daily basis, students will be awarded:
 - * Academic Achievement Coupons
 - * Behavior and Participation Coupons

- * Every semester, students will be awarded:
 - * Academic Excellence Certificate
 - * Behavior, Participation, and Extra-Curricular Certificate
 - * Academic Progress Certificate (semester 2)

School– Home Connection

School-home connection is so strongly tied to student's success that it can predict how a student does in school.

Attend parent-teacher meeting

Take part in Parent-Teacher Association

Check for SMS and circulars posted on the school's portal on a regular basis

Check e-planner and resources available on the school's portal daily

Communicate your concerns through the school's portal/ phone calls/ scheduled appointments

Volunteer in school events

Respond to surveys

Follow us on our social media accounts/ Check our newsletter

Sessions' Allocation

Subject	Sessions per Week
English	6
Math	5
Science	5
Arabic	5
Social Studies	4
Islamic Studies	2
French	2
Qatar History	1
ICT	2
Art	1
PE	1
LMC	1

EIS follows standard-based American curriculum following:

- CCSS in English and Math
- NGSS in Science
- US National Framework & Geography Standards in SST
- MoEHE standards in Arabic, Islamic Studies and QH
- * Le Fle in French
- * ISTE in ICT
- * US National Standards in Art and PE

Accreditation Renewal in 2022-2023



Qatar National School Accreditation
(QNSA)

- * EIS was first accredited by QNSA in 2013.
- * EIS renewed its QNSA accreditation successfully in 2016-2017
- * EIS renewed its QNSA accreditation successfully in 2019-2020
- * EIS will apply for QNSA renewal in 2022-2023.

The school is further seeking international accreditation by WASC.

Thank you for coming

Please fill out the PTA Nomination form.

Your suggestions and comments are very valuable to us.

Kindly jot down your suggestions to ensure we are progressing towards a common goal.

Have a great day!